

funderfinder



annual report and accounts
April 2008 to March 2009

registered charity number 1010573
company limited by guarantee 2662629



Reference and administrative information

Name	Funderfinder Ltd.	
working name	FunderFinder	
Charity registration number	1010573	
Company registration number	2662629	
Registered office	65 Raglan Road LEEDS LS2 9DZ	
telephone	0113 243 3008	
fax	0113 243 2966	
email	info@funderfinder.org.uk	
website	www.funderfinder.org.uk	
Trustees/Directors	Alison Baxter	
	Janie Percy-Smith	Treasurer
	Margaret Thompson	
	Paul Ticher (from October 08)	
	Sue Tuffin	
	Martin Wainwright	Chair
	Alan Wallace (from April 08)	
Company Secretary	Jo Habib	
Staff	Liz Bee	Information Manager
	Sue Carter	Administrator
	Jo Habib	Director
	Joseph Miller	Technical Support Manager
	Pam Wright	Data Manager
Reporting Accountant	J. A. Jessop & Associates 10 Park Hill, Bradley Huddersfield HD2 1QG	
Bank	Yorkshire Bank, Albion St, Leeds LS1 6AG	



DIRECTORS' RESPONSIBILITIES

Company law requires the Directors to prepare Accounts for each financial year which give a true and fair view of the state of affairs of the Company and of the profit or loss of the Company for that period. In preparing those Accounts Directors are required to:

1. select suitable accounting policies and apply them consistently;
2. make judgements and estimates that are reasonable and prudent;
3. follow applicable accounting standards, subject to any material departures disclosed and explained in the Accounts; and,
4. prepare the Accounts on the going concern basis unless it is inappropriate to presume that the Company will continue in business.

The Directors are responsible for keeping proper accounting records which disclose with reasonable accuracy at any time the financial position of the Company and to enable them to ensure that the Accounts comply with the Companies Act 1985. They are also responsible for safeguarding the assets of the Company and hence for taking reasonable steps for the prevention and detection of fraud and other irregularities.

In preparing this Report, the Directors have taken advantage of special exemptions applicable to small companies.

SIGNED ON BEHALF OF THE BOARD OF DIRECTORS

Secretary

Approved by the Board : 21st July 2009

ACCOUNTANT'S REPORT TO THE MEMBERS OF FUNDERFINDER LTD.

We have prepared, without carrying out an audit, the Accounts for the year ended 31st March 2009 set out on pages 15 to 19.

RESPECTIVE RESPONSIBILITIES OF DIRECTORS AND THE REPORTING ACCOUNTANT

As described on page 2 the Company's Directors are responsible for the preparation of the Accounts and they believe that the Company is exempt from an audit. It is my responsibility to examine the Accounts and, based on my examination, to report my opinion, as set out below, to the members.

BASIS OF OPINION

We conducted our examination in accordance with the appropriate standards for reporting accountants issued by the Auditing Practices Board. This examination consisted of comparing the Accounts with the accounting records kept by the Company, and making such limited enquiries of the officers of the Company as I considered necessary for the purpose of this report.

The examination was not an audit conducted in accordance with Auditing Standards. Accordingly I do not express an audit opinion on the Accounts. Therefore my examination does not provide any assurance that the accounting records and the Accounts are free from material misstatement.

OPINION

In our opinion

- a) the Accounts are in agreement with those accounting records kept by the Company under Section 221 of the Companies Act 1985;
- b) having regard only to, and on the basis of, the information contained in those accounting records, the Accounts have been drawn up in a manner consistent with the accounting requirements specified in Section 249C(6) of the Act;
- c) the Company satisfied the conditions for exemption from an audit of the Accounts for the year specified in Section 249A(4) of the Act and did not, at any time within that year, fall within any of the categories of companies not entitled to the exemption specified in Section 249B(1) (a)-(f).



J. A. JESSOP & ASSOCIATES, ACCOUNTANTS

24th June 2009

Structure, governance and management

FunderFinder is a company limited by guarantee and a registered charity. Its governing documents are its Memorandum and Articles of Association. It was incorporated under the Companies Act 1985 on the 13th November 1991 and entered in the Central Register of Charities on the 22nd April 1992.

The only members of the company are its directors, all of whom are both directors of the company and trustees of the charity. There must be at least five trustees and no more than eleven. Together they comprise the Board of trustees. All trustees must be at least eighteen years old.

At every annual general meeting, a quarter of the trustees – those that have served as trustees for longest - retire. The Chair of the Board may invite a retiring trustee to serve another term but this is the exception rather than the norm and in any case, no trustee can serve for more than six years at a time.

Trustees are not paid, except for reasonable out-of-pocket expenses incurred in attending meetings.

If FunderFinder was wound up and had financial liabilities it could not meet, trustees would be required to contribute an amount not exceeding £1.

Trustee recruitment and induction

Existing trustees identify possible new trustees, taking into account the need for a range of skills and experience to be represented on the Board to ensure effective management, the requirement that the Company be accountable to the users of its programs, and the desirability of achieving diversity within the membership, particularly with regard to gender, ethnicity and age.

Some trustees come to the Board with a good working knowledge of FunderFinder and its software, others don't. In order to provide the right amount of support and information, a personal induction plan is arranged for each new trustee.

How decisions are made

The Board of trustees usually meet four times a year. There are no standing sub-committees. Day-to-day decisions about the running of the organisation are taken by the staff. Trustees appoint the director and are involved in the appointment of other staff. Trustees approve budgets and take strategic decisions about the direction and operation of the organisation.

Risks

The major risks to which the charity is exposed are reviewed annually by the trustees and systems and procedures have been established to manage those risks.

Objectives and activities: what we do and how we do it

FunderFinder was established

"directly to promote and facilitate the more effective working of charities...and charitable purposes by voluntary and community groups...in particular...through the provision of advice, education and training relating to the acquisition of appropriate funding for the pursuance of charitable purposes".

To put these objectives into practice, FunderFinder creates software. Most of its activities are concerned with the development and maintenance of its own applications but from time to time it also develops and maintains applications for other charities and social enterprises.

FunderFinder's software

"If only there was a better way to work out who to write to, we could spend more time getting our ideas sorted out and presented well, and less time scouring the directories."

"Why don't these charities read what we say about our grant-making policies - half the organisations that write to us don't fit our criteria at all!"

It was to address complaints like these that the original FunderFinder software, GIN, was developed. The task was to create a fast, efficient method of matching grant-makers' interests with grant-seekers' needs - one that could be easily kept up to date and which would be available, in particular, to small, local voluntary organisations which often didn't have the resources, access to information, and contacts of larger charities.

FunderFinder GIN (*Groups In Need*) was initially developed by the West Yorkshire Charities Information Bureau on behalf of the Federation of Charity Advice Services (FCAS) with financial support from the Barrow & Geraldine S Cadbury Trust and the Calouste Gulbenkian Foundation.

It involved the creation of a new, hierarchical classification of funders' interests. This was created for the project by Russell Sweeney, then Chair of the Library Association's Dewey Decimal Classification Committee. In 2002 FunderFinder adopted the Association of Charitable Foundations' new classification, a system strongly influenced by FunderFinder's experience of classifying funders' interests.

FunderFinder PIN (*People in Need*) was developed during 1995-96 with financial support from the Baring Foundation; a grant from the Joseph Rowntree Charitable Trust helped with data entry. PIN matches up the needs of individuals needing charitable help (whether for education or because of poverty, ill-health or disability) with charitable trusts that help individuals. In 2001, a 'Public PIN' version was developed. It was designed for use by the person in need themselves, rather than an advisor.

In 2006 PIN was completely re-written, to incorporate the 'public' and 'advisor' features in one application and to enable updating over the Internet. GIN was similarly re-written and launched in 2007.

In 2008 FunderFinder started work on the development of Online PIN and Online GIN. Having GIN and PIN available as web applications is not only about keeping up with technology, it is also about increasing access to useful information. The online versions allow an organisation such as a library or local development agency to provide remote access to its members. People that are geographically remote or have mobility problems do not have to trek miles to use the software. If there is no local agency that can provide access, people can pay a modest sum to use PIN or GIN online for 24 hours. For many organisations and individuals, a day of finding funders is all that's needed.

FunderFinder also produces two free software applications. *Apply Yourself* was developed in 1999/2000 with financial help from the Baring Foundation and the Scurrah Wainwright Charity, *Budget Yourself* was developed in 2002 with financial help from the Home Office's Active Community Unit. *Apply Yourself* helps voluntary and community groups write effective funding applications. *Budget Yourself* helps groups create budgets for the work they want to do and then use their budgets to monitor how they are doing.

Although FunderFinder received grant-aid for some of the costs involved in developing its software, essentially FunderFinder earns all its income – from sales and annual renewal fees of its own software and from technical or consultancy work for other organisations.

What the staff do, therefore, is

- ensure that the content of the software is up-to-date, accurate and comprehensive – both the details of funders and the advice and information provided;
- ensure that the functionality and look-and-feel of the software is as user-friendly and useful as possible;
- provide technical support and help to people using the software;
- maintain back-office systems to deal with orders, updates and finances;
- keep an eye on the environment in which funding advice is given to ensure that FunderFinder's activities and products are meeting the needs of both funding advisors and the groups and individuals they work with;
- develop and maintain appropriate applications for others.



How does FunderFinder's software make a difference?

Although there are rumours of fabulously wealthy charitable trusts and foundations unable to give their money away because no-one applies, in reality almost all funders have more applications than they can positively respond to and many would rather not be 'found' by additional potential applicants. FunderFinder does not increase the amount of resources reaching the voluntary and community sector or individual people in need. Arguably we make it more difficult for some people to get a grant because we increase competition for existing resources.

So what good is FunderFinder?

- We widen access to existing charitable resources.
- We decrease the amount of time and energy grant-seekers spend writing to inappropriate funders and grant-makers spend dealing with inappropriate applications.
- We help small and emergent voluntary and community groups understand the funding system and improve their ability to write effective applications.
- We provide useful tools to local development agencies, funding advice services and those supporting individuals needing charitable help.
- We provide funders with a way of giving rejected grant-seekers helpful information about other sources of money.
- We contribute to current debates about how best to develop the capacity of voluntary and community groups, particularly in regard to understanding of and expertise in funding.

Achievements and performance: how well have we done?

A difficult year

At one level a huge amount was achieved in the year: the Online version of PIN was developed and launched and both the website and back-office functions were completely re-organised to accommodate the online applications, ordering and paying by credit or debit card. Staff designed the ordering and internal systems, wrote the code, migrated the databases from Access to MySQL and so on. It all took longer than anticipated, however, and Online PIN wasn't launched until February.

It took longer, and cost more. This, coupled with the decision of the University for Industry not to renew their 'bulk buying' of PIN for guidance centres in England – due to cuts in their own budget – meant that FunderFinder had to seek external funding to ensure the development of Online PIN and GIN. In the autumn The Esmée Fairbairn Foundation made us a grant of £60,000 towards these development costs. The trustees and staff of FunderFinder are extremely grateful to the Foundation, both for the funding and for the excellence of their application processes.

As we went through the year it became increasingly clear that, even with this additional funding, FunderFinder was spending more than it was earning, and not just because of the new developments. The economic climate was having an impact on users; sales and renewals were down. A couple of for-profit organisations that offer funding databases were stepping up their marketing campaigns. As a result some local development agencies were being given free grant-finding applications by their councils, and therefore felt no need to continue paying for FunderFinder's products. A charity had invested a considerable amount of charitable money into the development of a free website offering information about benevolent funds. In some parts of the voluntary sector, trust funding was of less importance than it had once been. And there seemed to be an increasing belief that all necessary information about funding was 'out there' and free on the Internet; there was no need to pay for specialist search programs. All of this meant that we were increasingly concerned about both short-term and long-term sustainability. Would FunderFinder be able to pay its way once both Online PIN and Online GIN were finished?

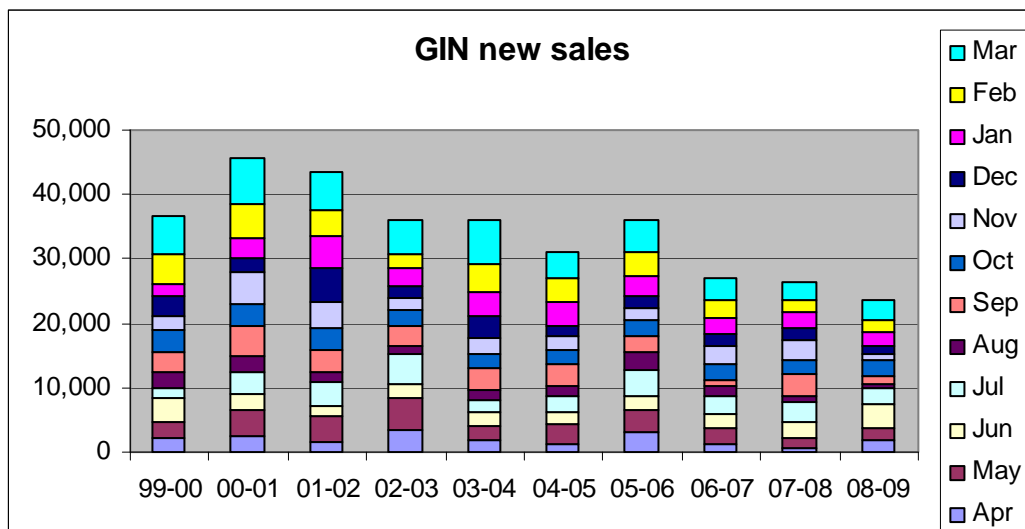
In thinking about the difficult position FunderFinder found itself in, the trustees looked long and hard at whether the organisation had outgrown its usefulness. Their view was that there was still a need for FunderFinder's products and for its approach to the whole business of finding relevant funders. But it was clear that many people who are considering buying or using grant-identifying applications would not know a good set of results from a poor set. People are very used to search engine results where many of the

'hits' turn out not to be relevant. The question of what is 'good enough' in terms of results is a crucial one.

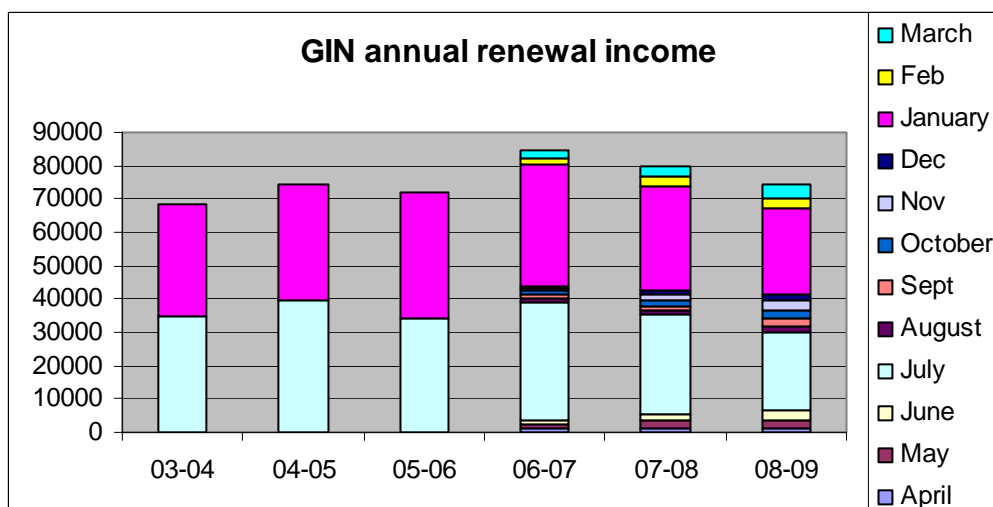
Due to the extraordinarily generous offer of support from a local charitable trust (made just after the end of the financial year covered by this report), FunderFinder has sufficient funding to continue through the next year, by which time it should be much more possible for the trustees to make a judgement about long-term sustainability.

GIN 2008-09

In the year 138 organisations bought licenses to run GIN on 170 different sites. This compares with 162 organisations and 184 sites in the previous year. The total income from new licenses was £23,625.



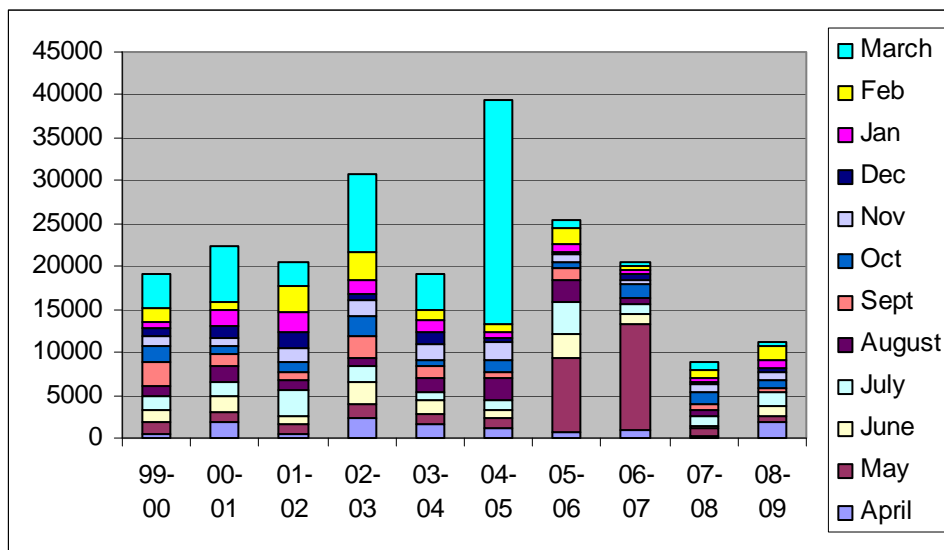
The total value of annual renewal fees for GIN was about three times this.



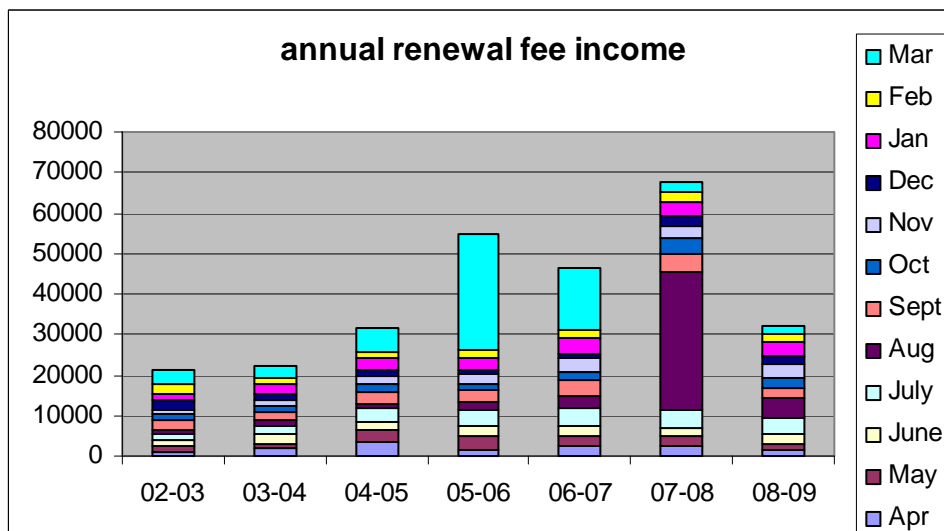
At the year end, there were 1,123 active sites using GIN. Later in this report there is a list of those that have GIN as a resource for (certain) others.

PIN 2008-09

During the year 71 different organisations bought licenses to run PIN on 117 different sites. This compares to 68 organisations and 94 sites in the previous year. The total income from new licences was £11,195. The impact of the loss of bulk sales - and renewals - by the University for Industry was still pronounced.



The total value of annual renewal fees was about 3 times the income from new licences.



At the year end there were 1,077 active sites using PIN. Later in this report there is a list of those that have GIN as a resource for (certain) others.

Online PIN

Online PIN was launched in February. By the end of March 61 organisations had decided to swap over from PIN to the standard online version and 7 to the provider version. 3 new sales were directly for Online PIN and 5 people had bought 24 hour access to Online PIN (at a cost of £5.50 including VAT) in the fortnight that this service was available. (24 hour access requires payment by credit card online and it wasn't until the very end of the year that we got this working.)

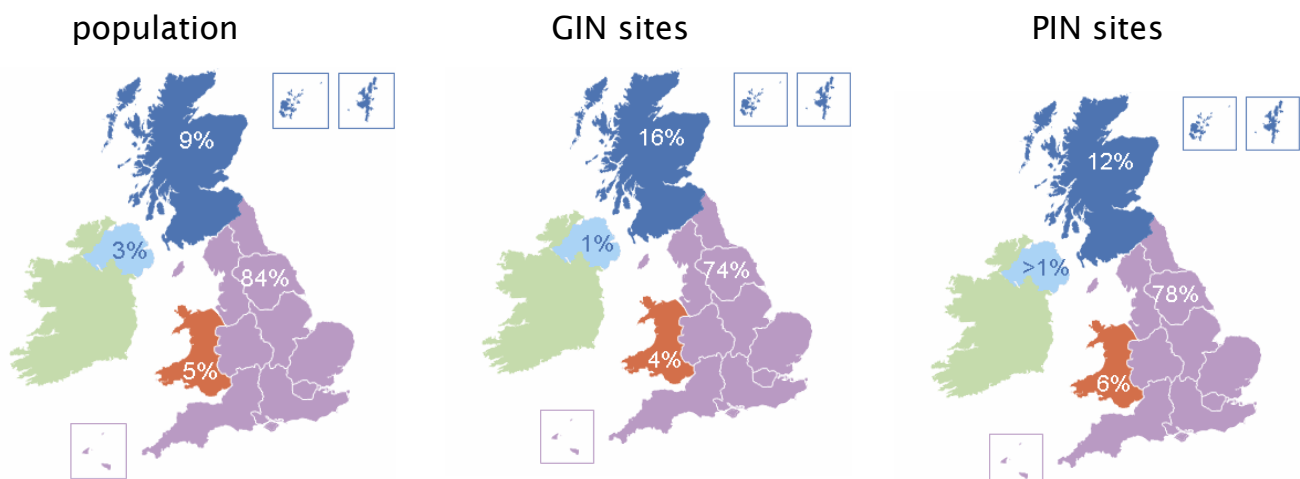
The 7 organisations that decided on a provider subscription were Islington Central Reference Library, University of Teesside, Halton Libraries, University of Warwick, Swansea Library and Information Service, University of Birmingham and the University of the West of England. The provider version, which is more expensive but allows remote access by members, students etc, was designed with libraries and universities in mind so it was gratifying to see the take up by these target users.

Apply Yourselfs and Budget Yourselfs 2008-09

We give *Apply Yourselfs* and *Budget Yourselfs* away at conferences and similar events. They can be downloaded from our website. Other organisations can make copies and distribute them as long as no charge is involved. During the year there were 5,200 downloads of *Apply Yourselfs* and 3,146 downloads of *Budget Yourselfs*.

Distribution throughout the UK

FunderFinder tries to produce tools that are useful to grant-seekers throughout the UK. At the year end, the distribution by country was as follows (percentages rounded):



What do these figures and charts tell us?

As discussed above, FunderFinder has probably lost market share to other providers of funding information in the last year. On top of which some organisations are economising and giving up paying for any funding information at all, and others have wound up altogether. Nevertheless there is still a steady demand for our products and both GIN and PIN are installed in over 1,000 different sites. Since many organisations like councils for voluntary service, advice agencies and libraries have our software as a resource for others, both products are used by tens of thousands of organisations/people in any year.

The percentage of GIN and PIN sites in Scotland has always been greater than the percentage of the population in that country. This year it is particularly noticeable with GIN. Whether this has anything to do with differences in style and distribution of government funding in Scotland, compared particularly to England, is an interesting question. Certainly the importance of grants (from any source) in the mix of funding available to voluntary and community organisations seems to have greater resonance in Scotland.

Work for others

In 2007-08 FunderFinder did almost no work for others, though we continued to maintain the information about charitable trusts available on the London Housing Foundation's website.

Out and about

Throughout the year FunderFinder had a presence at various 'funding fairs' (usually organised by councils for voluntary service or funding advice agencies) and had a stand at various conferences and exhibitions including The Gathering, Charityfair and the Library and Information Show.

Financial Review

Reserves policy

FunderFinder's Reserves Policy includes the following:

Basis

FunderFinder's Reserves Policy should be based on its trading figures exclusively. Grants for development work or commissions to undertake specific projects should not generally be considered when estimating future income, since this type of work is generally 'self-balancing'.

FunderFinder's trading income is a reflection of the demand for its services, and its own needs stem from this. A significant drop in income will indicate that FunderFinder's products are no longer being found useful by other charities and non-profit agencies. In this event, FunderFinder will either develop other products for which there is a demand or the Board will decide to wind up the charity after fulfilling its residual contractual obligations.

Reserves should at least be at a level to meet outstanding liabilities in the event of sudden non-viability.

Calculation

The Board recognises that there will be costs involved in ceasing to operate. The calculation of the costs of winding up the charity will be based on three months' staff costs, office and administrative expenses over that period and statutory redundancy pay.

These figures will be re-calculated annually to make allowance for changes in redundancy entitlements and contractual obligations.

Commentary

The trustees had anticipated making a loss in the year but as it turned out, the loss was greater than had been hoped, despite the much-valued grant from the Esmée Fairbairn Foundation. Normally almost all of FunderFinder's income stems from 'primary purpose trading' and it is a firm belief of the trustees that the organisation 'ought' to earn all its own income. New developments are a real problem, however, and FunderFinder's attempt to bear all the costs of developing online versions of GIN and PIN look, with hindsight, over-ambitious. The timing of the general economic downturn was not helpful.

FunderFinder strives to have sufficient reserves to wind itself up properly, should the trustees decide that there is no longer a role for the organisation. Since this became a real possibility this year, the on-going problem involving The Pensions Trust, FunderFinder's designated pension provider, was thrown



into stark relief. The Pensions Trust's Growth Plan has been affected by pensions legislation and FunderFinder will be liable for a debt plus actuarial fees were FunderFinder to wind itself up or withdraw from the scheme in some other way. This 'debt' is incurred simply because FunderFinder is a member of the Growth Plan; it is FunderFinder's share of a shortfall that the Pensions Trust is now deemed to have. Although The Pensions Trust is actively working to reduce the liability to nothing, the economic downturn has in fact resulted in the debt growing since last year. The actual amount has to be calculated at the time the charity is wound up, but the thought of having to find a significant sum to cover this 'debt' on top of the normal wind-up costs added to trustees' anxieties.

Future plans

FunderFinder's key tasks for the year ahead are to finish developing and launch Online GIN, finish automating back-office routines, and make as much effort as possible to publicise its resources in an effective way. The trustees will then be in a better position to make a judgement about long-term viability.

STATEMENT OF FINANCIAL ACTIVITIES FOR THE YEAR ENDED 31 MARCH 2009

		Unrestricted	Restricted	2009	2008
	<u>NOTE</u>	<u>Funds</u>	<u>Funds</u>	<u>Total</u>	<u>Total</u>
				<u>Funds</u>	<u>Funds</u>
<u>INCOME AND EXPENDITURE</u>					
<u>INCOMING RESOURCES</u>					
Income from Charitable Activities		116474	-	116474	164496
Grant received			60000	60000	
Bank Interest		669		669	1651
<u>TOTAL INCOMING RESOURCES</u>		<u>117143</u>	<u>60000</u>	<u>177143</u>	<u>166147</u>
<u>RESOURCES EXPENDED</u>					
Charitable activities		143996	51597	195593	188628
Governance costs	2	4590		4590	4470
<u>TOTAL RESOURCES EXPENDED</u>	3	<u>148586</u>	<u>51597</u>	<u>200183</u>	<u>193098</u>
<u>NET INCOMING/(OUTGOING)</u>					
<u>RESOURCES FOR THE YEAR</u>					
		<u>(31443)</u>	<u>8403</u>	<u>(23040)</u>	<u>(26951)</u>
Balances brought forward at 1st April 2008		72089	-	72089	99040
<u>BALANCES CARRIED FORWARD</u>					
<u>AT 31ST MARCH 2009</u>		<u>£ 40646</u>	<u>£ 8403</u>	<u>£ 49049</u>	<u>£ 72089</u>

CONTINUING ACTIVITIES

None of the Company's activities were acquired or disposed of during the above two financial years

OTHER RECOGNISED GAINS AND LOSSES

The Company has no recognised gains or losses other than the incoming or outgoing resources for the above two financial years.



BALANCE SHEET AS AT 31ST MARCH 2009

	<u>NOTE</u>	<u>2009</u>	<u>2008</u>
<u>TANGIBLE FIXED ASSETS</u>	4	1360	1600
<u>CURRENT ASSETS</u>			
Debtors	5	29992	39577
Cash at Bank		<u>19216</u>	33807
		49208	
<u>CREDITORS</u>			
Amounts falling due within one year	6	<u>1519</u>	2895
<u>NET CURRENT ASSETS</u>			
		<u>47689</u>	_____
<u>NET ASSETS</u>			
		£49049	£ 72089
<u>ACCUMULATED FUNDS</u>			
Unrestricted Income Funds		40646	72089
Restricted Income Funds		8403	-
		_____	_____
<u>FUNDS EMPLOYED</u>			
		£49049	£ 72089
		_____	_____


The Directors have taken advantage of special exemptions conferred by Schedule 8 to the Companies Act 1985 applicable to small companies in the preparation of the Accounts and have done so on the grounds that, in their opinion, the Company is entitled to those exemptions. The exemption conferred by Section 249A(2) not to have these Accounts audited applies to the Company and the Directors confirm that no notice has been deposited under Section 249B(2) of the Companies Act 1985.

The Directors acknowledge their responsibility for ensuring that :

1. the Company keeps accounting records which comply with Section 221 of the Companies Act 1985.
2. the Accounts give a true and fair view of the state of affairs of the Company as at 31st March 2005 in accordance with the requirements of Section 226 and which otherwise comply with the requirements of the Companies Act 1985 relating to Accounts, so far as they apply to small companies.

SIGNED ON BEHALF OF THE BOARD OF DIRECTORS


Approved by the Board


21st July 2009



NOTES TO THE ACCOUNTS AT 31ST MARCH 2009

1 ACCOUNTING POLICIES

Basis of Accounting

The Accounts have been prepared under the historical cost convention and have been drawn up in accordance with the Statement of Recommended Practice "Accounting and Reporting by Charities (Revised 2005)".

Cash Flow

The Accounts do not include a Cash Flow Statement because the Company, as a small reporting entity, is exempt from the requirement to prepare such a statement under Financial Reporting Standard 1 "Cash Flow Statements".

Incoming Resources

Income from Operating Activities represents net invoiced sales of goods and services after deducting Value Added Tax and any discounts allowed.

Resources Expended

Costs of Operating Activities are reflected in the Accounts in the accounting period to which they refer. Support Costs for Operating Activities are not shown separately as they are not considered to have a material effect on the Accounts.

Tangible Fixed Assets

Depreciation is provided on Tangible Fixed Assets with the aim of writing off the cost, less estimated residual value, of each asset, over its anticipated useful life as follows :

Computer Equipment	100% in the year of purchase
Fixtures and Fittings	15% on a reducing balance basis

Operating Leases

Rentals applicable to operating leases where substantially all of the benefits and risks of ownership remain with the lessor are charged against income as incurred.

2 <u>GOVERNANCE OF THE CHARITY</u>	<u>2009</u>	<u>2008</u>
Salaries and Ancillary Costs	3092	3008
Statutory Fees and Board Meeting Expenses	538	532
Accountancy Fee	<u>960</u>	<u>930</u>
	£ <u>4590</u>	£ <u>4470</u>

3 **TOTAL RESOURCES EXPENDED**

	<u>Depreciation</u>	<u>Staff Costs</u>	<u>Other Costs</u>	<u>2009</u>	<u>2008</u>
Operating Activities	908	143705	50980	195593	188628
Governance of the Charity	-	3092	1498	4590	4470
	£ <u>908</u>	£ <u>146797</u>	£ <u>52478</u>	£ <u>200183</u>	£ <u>193089</u>

Staff Costs

Salaries				130266	129299
Social Security and Pension Contributions				<u>16531</u>	<u>16408</u>
				£ <u>146797</u>	£ <u>145707</u>

Other Costs

Direct Charges				21030	17909
Premises				11587	10887
Other Standing Expenses				7673	9189
General Charges				<u>12188</u>	<u>7881</u>
				£ <u>52478</u>	£ <u>45866</u>

4 **TANGIBLE FIXED ASSETS**

	<u>Computer Equipment & Printers</u>	<u>Fixtures and Fittings</u>	<u>Total</u>
<u>Cost</u>			
At 1st April 2008	35457	9766	45223
Additions in the Year	<u>668</u>	-	<u>668</u>
At 31st March 2009	£ <u>36125</u>	£ <u>9766</u>	£ <u>45891</u>
<u>Depreciation</u>			
At 1st April 2008	35457	8166	43623
Provision for the Year	<u>668</u>	<u>240</u>	<u>908</u>
At 31st March 2009	£ <u>36125</u>	£ <u>8406</u>	£ <u>44531</u>
<u>Net Book Values</u>			
At 31st March 2009	£ <u>NIL</u>	£ <u>1360</u>	£ <u>1360</u>
At 1st April 2008	£ <u>NIL</u>	£ <u>1600</u>	£ <u>1600</u>

At 31st March 2009 no capital expenditure was contracted (2008 : £NIL) and none was authorised but not contracted for (2008 : £NIL).

5 <u>DEBTORS</u>	<u>2009</u>	<u>2008</u>
Trade Debtors	19210	32021
Value Added Tax	9423	6220
Prepayments	<u>1359</u>	<u>1336</u>
	<u>£29992</u>	<u>£ 39577</u>

Trade Debtors includes amounts, as yet unspecified, which will require to be written off in the coming year in respect of subscriptions and upgrades not renewed.

6 <u>CREDITORS : AMOUNTS FALLING DUE WITHIN ONE YEAR</u>	<u>2009</u>	<u>2008</u>
Trade Creditors	555	1965
Accruals	<u>960</u>	<u>930</u>
	<u>£ 1515</u>	<u>£ 2895</u>

7 CONTINGENT LIABILITY

The Directors recognise that, in the event of the Company's being forced, or choosing to cease its operations, there would be costs involved in winding up the Company. These are calculated as three months staff costs, office and administrative expenses over that period and statutory redundancy pay. At the accounting date the maximum amount of such costs was calculated to be £59144. In the circumstances the Accumulated Funds would be reduced by that amount.

The Company's designated pension provider is The Pensions Trust. The Company currently contributes towards pensions for three members of staff who have "Growth Plan" policies. Recent legislation has resulted in a recalculation of the Growth Plan's finances which shows the Plan to be in deficit. The consequence for the Company if it were to withdraw from the scheme would be a liability calculated to be £25123. In the circumstances the Accumulated Funds would be reduced by that amount.

8 COMMITMENTS

There are no significant commitments other than those detailed elsewhere in these Notes.

RECEIPTS AND PAYMENTS ACCOUNT FOR THE YEAR ENDED 31ST MARCH 2009

	<u>2009</u>	<u>2008</u>
<u>RECEIPTS</u>		
Fees	128451	172305
Consultancy Fees and Software Services	974	10367
Grant	60000	
Bank Interest	669	1651
Value Added Tax : Output Tax	21663	31794
	<hr/>	<hr/>
	211757	216117
<u>PAYMENTS</u>		
Manuals, Wallets, Disks and Update Costs	2942	5516
Technical Consultancy	13280	6775
Subscriber Training Expenses	319	-
Software Services	199	1345
Rent, Rates and Water	9677	9632
Lighting and Heating	1910	1255
Salaries, National Insurance and Pension Contributions	146797	145707
Insurance	1989	1986
Printing, Postage and Stationery	5665	2409
Telephone, Fax and Internet	2266	1780
Travelling Expenses	15	648
Repairs and Renewals	342	1754
Computer Services and Enhancement	229	1283
Accountancy	930	890
Legal Fees	500	-
Sundry Expenses	1527	1467
Advertising and Marketing	10656	6076
Bank Charges	210	222
Conference and Course Fees	27	-
Publications and Subscriptions	1333	1618
Purchase of Fixed Assets	668	1240
Value Added Tax : Input Tax	2729	2794
Remittances (net)	22138	27711
	<hr/>	<hr/>
	226348	222108
<u>EXCESS OF (PAYMENTS) OVER RECEIPTS</u>	(14591)	(5991)
<u>OPENING BANK BALANCE</u>	33807	39798
	<hr/>	<hr/>
<u>CLOSING BANK BALANCE</u>	£19216	£ 33807
	<hr/>	<hr/>

This page does not form part of the statutory accounts and is for management information only

INCOME AND EXPENDITURE ACCOUNT FOR THE YEAR ENDED 31ST MARCH 2009

	<u>2009</u>	<u>2008</u>
<u>FEES RECEIVABLE</u>	115500	154129
<u>OTHER INCOME</u>		
Consultancy Fees and Software Services	974	10367
Grant received	60000	-
Bank Interest	669	1651
	-----	-----
	177143	<u>166147</u>
<u>DIRECT CHARGES</u>		
Manuals, Wallets, Disks and Update Costs	2942	5516
Technical Consultancy	13280	6799
Subscriber Training Expenses	319	-
Software Services	-	1345
<u>STANDING EXPENSES</u>		
Rent, Rates and Water	9677	9632
Lighting and Heating	1910	1255
Salaries, National Insurance and Pensions	146797	145707
Insurance	1966	1950
Printing, Postage and Stationery	4474	3601
Telephone, Fax and Internet	2266	1727
Travelling Expenses	15	648
Repairs and Renewals	342	1754
Computer Services and Enhancement	104	1361
Accountancy	960	930
Legal Fees	500	-
Sundry Expenses	1535	1467
<u>GENERAL CHARGES</u>		
Advertising and Marketing	10508	6041
Bank and Credit Card Finance Charges	241	222
Conference and Course Fees	27	-
Publications and Subscriptions	1412	1618
<u>PROVISION FOR DEPRECIATION</u>	908	1525
	-----	-----
	200183	<u>193098</u>
<u>NET INCOME/(EXPENDITURE)</u>	£ (23040)	£ (26951)
	-----	-----

This page does not form part of the statutory accounts and is for management information only



Who are the members/trustees/directors?

Members of the company are members (and trustees and directors) in their own right and do not represent any organisation they work for or belong to. Nevertheless it may be helpful to know something about them.

Alison Baxter Chief Officer of Oxfordshire Community & Voluntary Action

Janie Percy-Smith consultant, formerly Professor of Public Policy at the Policy Research Institute at Leeds Metropolitan University

Margaret Thompson trust administrator of the Yapp Charitable Trust, formerly a funding advisor

Paul Ticher consultant and trainer, advising non-profit organisations on IT and data protection issues

Sue Tuffin consultant, formerly at The Big Lottery Fund and Chief Librarian at Leeds City Libraries.

Martin Wainwright Northern editor of The Guardian Newspaper, trustee of several charitable trusts

Alan Wallace consultant, formerly manager of The Coalfields Regeneration Trust in South Yorkshire and director of social enterprise consultancy, the Camberwell Project



Organisations with GIN as a resource for others

ENGLAND

London

Bexley	Bexley Voluntary Service Council
Brent	Brent Association for Voluntary Action London Borough of Brent
Bromley	Community Links Bromley
Camden	Voluntary Action Camden
Ealing	Ealing CVS Enfield Voluntary Action
Greenwich	The Forum at Greenwich
Hackney	Hackney CVS Women's Resource Centre
Hammersmith & Fulham	Community Housing & Therapy Fulham Reference Library
Haringey	Gladesmore Community School
Hounslow	Hounslow Council CVS Hounslow
Islington	Crafts Council Islington Central Reference Library Islington Voluntary Action Council Kingston Voluntary Action
Kingston upon Thames	
Lambeth	EM Community Umbrella Group GHARWEG Advice Training & Careers Centre Kennington Association Lambeth Voluntary Action Council
Lewisham	Peckham Voluntary Sector Forum Voluntary Action Lewisham
Merton	Merton Voluntary Service Council
Newham	Custom House & Canning Town Community Renewal Project
Redbridge	Redbridge CVS
Richmond upon Thames	Hampton Hill Voluntary Care Group Richmond Upon Thames CVS
Southwark	Health First Learning Centre Paintings in Hospitals
Sutton	Sutton CVS
Tower Hamlets	CIDA Isle of Dogs Community Foundation Praxis Community Projects
Waltham Forest	Voluntary Action Waltham Forest
Wandsworth	Wandsworth Voluntary Sector Development Agency Woodcraft Folk
Westminster	Prince's Regeneration Trust

Northeastern England

Durham County

Derwentside DC	Derwentside CVS
Durham DC	DAYCO EWE Centre Murton Parish Council
Easington DC	Durham County Council Haswell & District Mencap Horden youth & Community Centre Home-Start Parkside Community Centre
Sedgefield BC	CAVOS
Wear Valley DC	Durham RCC

Northumberland

Berwick-upon-Tweed DC	Glendale Gateway Trust
Blyth Valley DC	Blyth Valley CVS
Castle Morpeth DC	Community Action Northumberland

Tees Valley

Darlington UC	Darlington Borough Council
Hartlepool UC	Hartlepool Borough Council
Middlesbrough UC	Middlesbrough Council
Redcar and Cleveland UC	Tees Valley Rural Community Council

Tyne & Wear

Gateshead MD	GVOC
Newcastle upon Tyne MD	Arts Council England, North East Newcastle CVS Tyne & Wear Museums
South Tyneside MD	External Youth Partnership
Sunderland MD	Social Enterprise Sunderland

North West England

Cheshire

Crewe & Nantwich DC	Crewe & Nantwich Voluntary Action
Halton UC	Halton Voluntary Action
Vale Royal DC	Age Concern Cheshire Voluntary Action Vale Royal WINCAP
Warrington UC	Alzheimer's Society Warrington Borough Council Warrington CVS

Cumbria

Allerdale DC	Machars Action Ltd
Barrow-in-Furness DC	BDDA
Carlisle DC	Carlisle CVS Carlisle Mencap - Carlisle
Copeland DC	Cumbria CVS West
Eden DC	Cumbria CVS Eden
South Lakeland DC	Cumbria CVS South

Greater Manchester

Bolton MD	Bolton CVS Canon Slade School
Bury MD	Bury Third Sector Development Agency
Manchester City MD	Arts Council England, North West Dance Initiative Greater Manchester
Salford MD, City of	Salford CVS
Stockport MD	Stockport CVS
Tameside MD	Hattersley Neighbourhood Partnership TAVYCO
Trafford MD	Trafford CVS
Lancashire	
Blackburn with Darwen UC	Blackburn Diocesan Board of Finance Lancashire Wildlife Trust
Blackpool UC	Blackpool Wyre & Fylde CVS
Burnley DC	Burnley Pendle & Rossendale CVS Mid Pennine Arts
Hyndburn DC	Hyndburn & Ribble Valley CVS



Lancaster DC	Lancaster District CVS
Preston DC	Access Lancashire Community Futures Lancashire Global Education Centre Preston CVS
Ribble Valley DC	North West E Net Limited
Rossendale DC	Community Action in Rossendale
Merseyside	
Liverpool MD	Diocese of Liverpool Liverpool Charity and Voluntary Services Merseyside Network for Change
St. Helens MD	St Helens District CVS
Wirral MD	Hoyle & District CVS Wirral Partnership Homes
Yorkshire & the Humber	
Humberside, East Riding	
East Riding of Yorkshire UC	East Riding Voluntary Action
Kingston-upon-Hull UC	Acorn Residents Association Hull CVS Unity in Community
North East Lincolnshire	Voluntary Action North East Lincolnshire
North Lincolnshire UC	Humber & Wolds Rural Community Council
North Yorkshire and York	
Harrogate DC	Harrogate & Area Council for Voluntary Service Nidderdale Plus Partnership Ripon CVS
Richmondshire DC	Richmondshire CVS
York UC	Allen Lane Foundation City of York Council York CVS Rural Action Yorkshire Ltd
South Yorkshire	
Doncaster MD	Doncaster New Deal for Communities Doncaster West Development Trust
Sheffield MD	Darnall Forum Sheffield City Council South Yorkshire Funding Advice Bureau
West Yorkshire	
Bradford MD	Bingley United Reformed Church Bradford Resource Centre Ilkley CVS
Calderdale MD	Voluntary Action Calderdale
Kirklees MD	Voluntary Action Kirklees
Leeds MD	Leeds Involvement Project Leeds Metropolitan University Voluntary Action Leeds
Wakefield MD	Fit4Funding Hemsworth Town Council Voluntary Action Wakefield District Wakefield MD Libraries
East Midlands	
Derbyshire	
Chesterfield DC	Links CVS
Derby UC	Derby CVS

Derbyshire Dales DC	UKDPC Derbyshire Dales CVS
South Derbyshire DC	South Derbyshire CVS
Leicestershire	
Harborough DC	Voluntary Action South Leicestershire
Hinckley and Bosworth	Voluntary Action Hinckley & Bosworth
Leicester UC	Northfield House Primary School
Melton DC	Voluntary Action Melton
Lincolnshire	
Lincoln DC	LCDP
Northamptonshire	
Northampton DC	Alliston Gardens Youth & Community Centre Northampton Volunteering Centre CVS Northampton and County
Nottinghamshire	
Bassetlaw DC	Retford Action Centre
Gedling DC	Gedling Community and Voluntary Service NYON
Newark and Sherwood DC	Tuxford Mine of Information
Nottingham UC	Erewash Voluntary Action CVS Nottingham City Council Nottingham CVS Voice EM
Rushcliffe DC	Rushcliffe CVS
West Midlands Region	
Herefordshire	
Herefordshire	Voluntary Action
Shropshire	
Shrewsbury and Atcham DC	Shrewsbury Community Transport Initiative Ltd Shropshire Youth Association
Telford & Wrekin UC	Telford & Wrekin CVS
Staffordshire	
East Staffordshire DC	Community Action & Support East Staffordshire East Staffordshire Borough Council
Lichfield DC	Lichfield & District CVS
Newcastle-under-Lyme DC	Newcastle-under-Lyme CVS
South Staffordshire DC	South Staffordshire Community and Voluntary Action Victory Outreach UK
Stafford DC	The Community Council of Staffordshire
Tamworth DC	Tamworth Council for Voluntary Service
Warwickshire	
Rugby DC	Rugby CVS
Warwick DC	Warwickshire Rural Community Council
West Midlands Metropolitan Area	
Birmingham MD	Birmingham Library Services Freshwinds Sanctuary
Coventry MD	Voluntary Action Coventry
Dudley MD	Dudley CVS
Sandwell MD	Sandwell CVO



Wolverhampton MD Wolverhampton Faith & Regeneration Network

Worcestershire

Malvern Hills DC Community First in Hereford & Worcester

Redditch DC Bromsgrove and Redditch Network

Worcester DC Worcester Volunteer Centre

Wyre Forest DC Community Action Wyre Forest

Eastern England

Bedfordshire

Bedford DC Bedfordshire Rural Communities Charity
Community & Voluntary Service Mid & North Beds

Luton UC Luton Borough Council
Voluntary Action Luton

Milton Keynes UC Milton Keynes CVO
Milton Keynes Pre School Learning Alliance

South Bedfordshire DC Voluntary & Community Action South Bedfordshire

Cambridgeshire

Cambridge DC Cambridge Online

Fenland DC Fenland CVS

Huntingdonshire DC Hunts Forum of Voluntary Organisations

Peterborough UC Peterborough CVS

Essex

Basildon DC BB&WCVS

Brentwood DC Brentwood CVS

Chelmsford DC Chelmsford CVS

Essex Libraries

Colchester DC Colchester CVS

Maldon DC Maldon & District CVS

Southend-on-Sea UC Southend Association of Voluntary Services

CIRCLES Project

Tendring DC Diocese of Chelmsford

Tendring CVs

Uttlesford DC CVS Uttlesford

Support 4 Sight

Thaxted Church Trust

Hertfordshire

Broxbourne DC CVS for Broxbourne & East Herts

Hertsmere DC Community Action Hertsmere

North Hertfordshire DC North Herts CVS

St Albans DC St Albans District CVS

Stevenage DC Stevenage CVS

Three Rivers DC Three Rivers CVS

Watford DC Watford CVS

Norfolk

North Norfolk DC Wells Area Partnership

South Norfolk DC Norfolk Rural Community Council

Suffolk

Babergh DC Babergh Communities Together

Ipswich DC St. Edmundsbury and Ipswich

Diocesan Board of Finance

Suffolk County Council

St Edmundsbury DC HAVO

Waveny DC Waveney Community Forum

Southeastern England

Berkshire

Reading UC Reading Voluntary Action

Slough UC Slough CVS

People 1st (Slough)

Buckinghamshire

Aylesbury Vale DC Buckinghamshire Community Action

Wycombe DC The Priory Centre

East Sussex

Brighton and Hove UC Brighton & Hove Community Initiatives

Hangleton & Knoll Project

Eastbourne DC Eastbourne Association of Voluntary Services

Hastings DC Hastings Voluntary Action

Rother DC Rother Voluntary Action

Wealden DC Michael Hall Steiner Waldorf School

Hampshire and Isle of Wight

Basingstoke and Deane DC Basingstoke & Deane Council
Basingstoke Voluntary Services

East Hampshire DC Community First East Hampshire

Eastleigh DC One Community Eastleigh

Fareham DC Fareham Community Action

Havant DC Havant CCS

Isle of Wight UC Isle of Wight RCC

New Forest DC Community First New Forest

Portsmouth UC Portsmouth Council of Community Service

Southampton UC Southampton City Council
Southampton Voluntary Services

Test Valley DC Test Valley Community Services

Winchester DC Meon Hall

Kent

Maidstone DC Voluntary Action Maidstone

Medway UC CVS Medway

Kent County Scout Council

Tunbridge Wells DC Dada-South

Voluntary Action West Kent

Oxfordshire

Oxford DC Oxfordshire Community and Voluntary Action

South Oxfordshire Oxfordshire CC Cultural & Adult Learning Services

Thames Valley Partnership

Vale of the White Horse DC Faringdon Area Project

Surrey

Epsom and Ewell DC Central Surrey CVS

Guildford DC Voluntary Action South West Surrey

Runnymede DC Runnymede Association of Voluntary Services

Tandridge DC Tandridge Voluntary Service Council

Woking DC Woking Association of Voluntary Service

West Sussex

Adur DC Adur Council for Voluntary Service

Chichester DC Chichester & District CVS

Crawley DC Crawley CVS

Horsham DC Horsham Area CVS

Southwestern England



Avon

City of Bristol UC Bristol Muslim Cultural Society
Community at Heart
Southern Brooks Community
Partnership
VOSCUR

North Somerset UC Community Action (Bath & NE Somerset)

South Gloucestershire UC South Gloucestershire Council (Yate Library)

Cornwall and Scilly Isles

Carrick DC Cornwall Disabled Association
Truro Reference & Information Library

Devon

Exeter DC Exeter Communities Initiative

Mid Devon DC Involve – Voluntary Action in Mid-Devon
Marine Education Trust

Plymouth UC Disability Information & Advice Centre
West Devon Community & Voluntary Services
University of Plymouth Student Union

South Hams DC South Hams CVS

West Devon DC West Devon Community & Voluntary Services

Gloucestershire County

Cotswold DC St Saviour's Alcohol Rehabilitation Centre

Gloucester DC GUIDE and PALS

Somerset County

Mendip DC Glastonbury Community Development Trust

Sedgemoor DC Sedgemoor District Council

Wiltshire

Swindon UC Voluntary Action Swindon

West Wiltshire DC Voluntary Action West Wiltshire

NORTHERN IRELAND

Belfast Corrymeela Community
East Belfast Mission

County Antrim

Antrim BC Antrim Borough Council

Ballymena BC Supporting Communities NI

County Armagh

Craigavon BC Zero 8 Teen

County Down

Ards BC Ards Development Bureau

County Fermanagh

Fermanagh RCN

SCOTLAND

Northern Scotland

Grampian region

Aberdeen City Aberdeen Library & Information Services

Aberdeenshire UC Aberdeenshire Disability Action
Grampian Opportunities

Moray UC Forres Group Action
Moray VSO
Moray Council

Highlands and Islands

Highland UC Caithness Voluntary Group
CVS Inverness
CVS Nairn
CVS North
Merkinch Enterprise
SCVO
Skye & Lochalsh CVO
Sutherland Partnership
The Highland Council Inverness
Nairn Badenoch and Strathspey
Voluntary Action in Badenoch & Strathspey
Voluntary Action Lochaber
Voluntary Groups – East Sutherland

Orkney Islands UC Shapinsay Development Trust
Voluntary Action Orkney

Shetland Islands UC Shetland Council of Social Service

Eilean Siar Harris Voluntary Service
Voluntary Action Lewis
Voluntary Action Barra and Vatersay

Tayside and Fife

Angus UC Angus Association of Voluntary Organisations
Montrose YMCA

Dundee City UC Dundee City Council
Dundee Voluntary Action

Fife UC WECAN! Food for Fife Project

Perth & Kinross UC PKAVS

Central Scotland

Central region

Clackmannanshire UC CVS Clackmannanshire Ltd

Stirling UC Stirling CVS

Lothian region

City of Edinburgh UC ACOSVO
Edinburgh City Libraries
Firstport
SCVO
Voluntary Sector Support Project

Midlothian UC Midlothian Voluntary Action

West Lothian UC Voluntary Action West Lothian
West Lothian Youth Action Project

Strathclyde region

Argyll & Bute UC Argyll & Bute Council

East Dunbartonshire Council

Dunbartonshire UC

East Renfrewshire UC Voluntary Action East Renfrewshire

Glasgow City UC Glasgow West Regeneration Agency
Greater Pollock Community Forum
Parkhead CAB
SCVO
The Mitchell Library

North Ayrshire UC Arran Council for Voluntary Service
CLASPS
CVSNA
North Ayrshire Council (Social Services)

North Lanarkshire UC CVS Hamilton/East Kilbride
North Lanarkshire North CVS
SoLVE



South Ayrshire UC Maybole Resource Centre
South Lanarkshire Association of Local Voluntary
UC Organisations (Lanark)

Southern Scotland

Dumfries and Annandale and Eskdale CVS
Galloway UC Dumfries & Galloway Council
Funding Ideas Ltd
Stewartry CVS
Wigtown CVS
Scottish Borders The Bridge in Central Borders
UC

WALES

North Wales

Denbighshire DVSC
Gwynedd Mantell Gwynedd
Wrexham County AVOW
Plas Madoc Community Association

Mid and West Wales

Ceredigion Ceredigion Association of Voluntary
Organisations
Pembrokeshire Pembrokeshire County Council

South Wales

Cardiff City and Children in Wales
County Voluntary Action Cardiff
Wales Council for Voluntary Action
Neath Port Talbot Neath Port Talbot CVS
County
Newport County Gwent Association of Voluntary
Organisations
Rhondda, Cynon, Gilfach Goch Community Association
Taff
Swansea City and Swansea CVS
County
Vale of Glamorgan ABESU
Vale CVS



Organisations with PIN as resource for (certain) others at the year end

ENGLAND

London

Barnet	Barnet College London Borough of Barnet Youth Service Middlesex University
Bromley	Bromley Connexions Cystic Fibrosis Trust
Camden	Arthritis Care City Lit Counsel and Care SOAS Specialists Institutions' Career Service University College London Union
Croydon	Croydon College Croydon Connexions Centre
Ealing	Thames Valley University
Enfield	Enfield College Southgate College
Greenwich	University of Greenwich Volunteer Centre Greenwich
Hackney	Contact a Family Education Advice Service for Adults
Hammersmith & Fulham	Fulham Reference Library CfBT Advice & Guidance (West London)
Harrow	Harrow Connexions Centre
Havering	SSAFA Forces Help London NE Branch
Hillingdon	British Polio Fellowship
Hounslow	West Thames College
Islington	City & Islington College City University City University Students' Union Crafts Council Islington Central Reference Library London Metropolitan University Scope Response
Kensington & Chelsea	Action Disability Kensington & Chelsea Imperial College Union Royal College of Music
Kingston upon Thames	Kingston Connexions Kingston Voluntary Action
Lambeth	GCHARWEG Advice Training & Careers Centre Lambeth Adult Guidance Service SSAFA Forces Help London
Lewisham	Goldsmiths University of London Trinity Laban Conservatoire of Music & Dance
City of London	University of London
Merton	Wimbledon Connexions Centre
Redbridge	Redbridge CVS
Richmond upon Thames	Brunel University St Mary's University College
Southwark	Action for Blind People Health First Learning Centre Kings College London

Sutton	London South Bank University Southwark College Southwark Council Sutton Connexions
Tower Hamlets	CIDA Praxis Community Projects Queen Mary University of London Tower Hamlets College Tower Hamlets Ideas Store & Library
Waltham Forest	RFET Waltham Forest
Wandsworth	Down's Syndrome Association Roehampton Students Union
City of Westminster	International Students House King's College Careers Service London School of Economics University of the Arts University of Westminster Counselling & Advisory Service Westminster Adult Education

Northeastern England

Durham County

Derwentside DC	Durham County Council
Durham DC	New College Durham University of Durham

Northumberland

Castle Morpeth DC	Community Action Northumberland
-------------------	---------------------------------

Teesside

Middlesbrough UC	SSAFA Forces Help Cleveland Middlesbrough Council Tees Valley Rural Community Council University of Teesside
Redcar and Cleveland UC	Connexions Redcar and Cleveland Redcar & Cleveland Voluntary Development Agency
Stockton-on-Tees UC	SSAFA Forces Help Cleveland Connexions Stockton

Tyne & Wear

Gateshead MD	GVOC
Newcastle upon Tyne MD	Newcastle University Student Union
North Tyneside MD	North Tyneside Carers Centre
Sunderland MD	University of Sunderland

North West England

Cheshire

Crewe & Nantwich DC	Crewe & Nantwich Voluntary Action
Halton UC	Halton Library Service
Vale Royal DC	Voluntary Action Vale Royal
Warrington UC	Warrington Borough Council (Library)

Cumbria

Carlisle DC	Cumbria CVS Carlisle University of Cumbria
Eden DC	Cumbria CVS Eden

Greater Manchester

Bolton MD	Bolton Carers Support Canon Slade School
Manchester City MD	Arts Council England North West Dance Initiative Greater Manchester Manchester Metropolitan University



	The Open University North-West
	University of Manchester
Salford MD, City of	Salford City Council
	Swinton & Worsley Mencap
	University of Salford
Tameside MD	Hattersley Neighbourhood Partnership
	Tameside Libraries Information Service
Trafford MD	Trafford College
	Trafford CVS
Lancashire	
Blackpool UC	Blackpool Wyre & Fylde CVS
Burnley DC	Burnley Pendle & Rossendale CVS
Lancaster DC	Lancaster University (Careers)
	University of Cumbria
Preston DC	Community Futures
	University of Central Lancashire
Ribble Valley DC	North West E Net Limited
Merseyside	
Liverpool MD	Age Concern Liverpool
	Knowsley Community College
	University of Liverpool
Sefton MD	Hugh Baird College
St. Helens MD	Care & Repair – St Helens
	St Helens Chamber
	St Helens College
	Starting Point
Yorkshire & the Humber	
Humberside, East Riding	
Kingston-upon-Hull UC	Hull Reference Library
	Preston Road Women's Centre
	Unity in the Community
	University of Hull
North East Lincolnshire	Rainer Humberside
North Lincolnshire UC	North Lincolnshire Council
	John Leggott Sixth Form College
North Yorkshire and York	
Craven DC	NYCC Adult Learning Services
	South Craven Community Action
Harrogate DC	Harrogate & Area CVS
	Carers Resource Harrogate
Richmondshire DC	Richmondshire CAB
Scarborough DC	NYCC Adult Learning Services
	University of Hull Scarborough Campus
York UC	Askham Grange Education Dept
	University of York
	York CVS
	York St John College
South Yorkshire	
Barnsley MD	Barnsley Central Library
	Barnsley Nord Anglia Lifetime Development Lifetime Opportunities and Connexions Centre
	DIAL Barnsley
Doncaster MD	Doncaster Metropolitan Borough Council
	Doncaster Nord Anglia Lifetime Development Lifetime Opportunities and Connexions Centre

Rotherham MD	Dearne Enterprise Centre
	Nord Anglia Lifetime Development
	Lifetime Development (North East)
	Thomas Rotherham College
Sheffield MD	Castle Advice Service
	Castle College
	Hillsborough & Area Advice Service
	Sheffield CABx Debt Support Unit/Sheffield Debtline
	Sheffield Carers Centre
	Sheffield Hallam University
	Sheffield Libraries Archives and Information
	Sheffield Mental Health CAB
	The University of Sheffield
	Woodseats Advice Centre
West Yorkshire	
Bradford MD	Bradford College Students Union
	Bradford Resource Centre
	EASA The Learning Shop
	Information Shop for Young People
	University of Bradford
Kirklees MD	Calderdale & Kirklees Careers
	Greenhead College
	Kirklees College Dewsbury Centre
	Kirklees Young People's Service
	University of Huddersfield
Leeds MD	Carers Leeds
	DIAL Leeds
	East Leeds Family Learning Centre
	IGEN Future Pathways
	Leeds Central Library
	Leeds Metropolitan University
	Trinity & All Saints College
	University of Leeds (Careers)
Wakefield MD	Hemsworth Town Council
	Wakefield MD Libraries
	Wakefield Wildcats Learning Zone
East Midlands	
Derbyshire	
Amber Valley DC	Connexions Centre Alfreton
	Connexions Centre Swadlincote
	Derbyshire Coalition for Inclusive Living
	SSAFA Forces Help Derbyshire
Chesterfield DC	Derbyshire Connexions Services
	NE Derbyshire CAB
Derby UC	Disability Direct
	Spirita HIA
	Support into Work
	University of Derby
South Derbyshire DC	South Derbyshire CVS
Leicestershire	
Charnwood DC	Loughborough Students Advice
	Loughborough University
Leicester UC	Connexions Leicestershire
North West Leicestershire DC	North West Leicestershire CVS
Lincolnshire	
Lincoln DC	The Royal British Legion
	University of Lincoln



Northamptonshire

Corby DC Northamptonshire Connexions Partnership
Daventry DC Care & Repair Daventry & South Nottinghamshire
Northampton DC Northampton College
Northampton Volunteering Centre

Nottinghamshire

Gedling DC Gedling Community and Voluntary Services
Mansfield DC Building Blocks Solutions
Newark and Tuxford Mine of Information
Sherwood DC Lincoln Gainsborough & Newark College
Nottingham UC Nottingham City Council
Nottingham Trent University
University of Nottingham
Shelter NHAS
SSAFA Forces Help
Student Advice & Representation Centre

West Midlands Region

Herefordshire Hereford College of Arts

Shropshire

Oswestry DC North Shropshire College
Shrewsbury and Shropshire Connexions
Atcham DC
South Shropshire DC South Shropshire Youth Forum
Telford & Wrekin Nextstep STW
UC SSAFA Forces Help Telford Division
Telford & Wrekin Council
Telford & Wrekin CVS

Staffordshire

East Staffordshire DC Community Action & Support East Staffordshire
Newcastle-under-Lyme DC Keele University
Stafford DC The Community Council of Staffordshire
Stoke-on-Trent UC Disability Solutions
Staffordshire University (Careers)

Warwickshire

Nuneaton & Bedworth DC Plumbing & Construction College
Warwick DC Age Concern Care Services Warwickshire
Warwickshire Rural Community Council

West Midlands Metropolitan Area

Birmingham MD Action for Blind People
Aston University Careers Advisory Service
Birmingham City University
Birmingham Library Services
Birmingham & Solihull Connexions
Bourneville College of Further Education
City College Birmingham
Freshwinds
RAF Association
Sutton Coldfield College
University of Birmingham

University of Central England Union of Students
UCE Birmingham Conservatoire
Coventry MD Coventry Carers Centre
Coventry University
University of Warwick Careers Service
Dudley Dudley College Student Services
Dudley CVS
Sandwell MD CARES
Solihull MD Solihull Carers Centre
Walsall MD Brownhills CA
SSAFA Forces Help
Wolverhampton MD University of Wolverhampton
Worcestershire
Worcester DC University of Worcester

Eastern England

Bedfordshire

Bedford DC Bedford College
Milton Keynes Connexions Access Point
UC Milton Keynes College
SCOPE Response

Cambridgeshire

Cambridge DC Anglia Ruskin University
Cambridge University Careers Service
Lucy Cavendish College
Huntingdonshire DC Connexions Cambridgeshire County Council
Peterborough UC Peterborough CVS
Peterborough Regional College

Essex

Basildon DC BB&WCVS
Chelmsford DC Anglia Ruskin University
Essex Libraries
Colchester DC Colchester CVS
University of Essex
Tendring DC Diocese of Chelmsford

Hertfordshire

Three Rivers DC Watford Mencap

Norfolk

Norwich DC City College Norwich
Norfolk & Norwich Millennium Library
Norwich University College of the Arts
The Learning Shop at the Forum
University of East Anglia
South Norfolk DC South Norfolk Council

Suffolk

Forest Heath DC Gateopener
Ipswich DC Age Concern Suffolk
Connexions Suffolk
St Edmundsbury and Ipswich Diocesan Board of Finance
Suffolk County Council
Suffolk New College
St Edmundsbury West Suffolk College
Connexions Suffolk
Suffolk Coastal DC Disability Advice Service East Suffolk
Waveney DC Connexions Suffolk



Southeastern England

Berkshire

Reading UC Connexions Thames Valley
University of Reading
Windsor and Maidenhead UC Lifelong Learning – Ellington
Community Initiative
Wokingham UC University of Reading

Buckinghamshire

Aylesbury Vale DC Aylesbury Connexions Access Point
Aylesbury Town Council
Chiltern DC Buckinghamshire New University
Wycombe DC High Wycombe Connexions Access
Point
The Priory Centre

East Sussex

Brighton and Hove UC Brighton Institute of Modern Music
University of Brighton
University of Sussex Union
Eastbourne DC Sussex Downs College Eastbourne
Hastings DC Hastings College of Arts &
Technology
Lewes DC Sussex Downs College Lewes
Sussex Downs College Newhaven

Hampshire and Isle of Wight

Basingstoke and Deane DC Horsham Careers Centre
East Hampshire DC Community First East Hampshire
DC
Eastleigh DC Worthing Careers Centre
Fareham DC The Rainbow Centre
Isle of Wight UC Isle of Wight RCC
New Forest Community First New Forest
Portsmouth UC University of Portsmouth
Southampton UC Merchant Navy Welfare Board
Southampton City Council
Southampton Solent University
Southampton University Students'
Union
Southampton Voluntary Services
Winchester DC Hampshire County Council
University of Winchester

Kent

Canterbury DC Canterbury College
University of Kent
Gravesham DC North West Kent College
Maidstone DC Kent Youth Service
Medway UC CVS Medway
Swale DC SSAFA Forces Help Kent (Sheppey)
Tonbridge & Malling DC SSAFA Forces Help Kent

Oxfordshire

Cherwell DC Connexions Oxfordshire Banbury
Oxford and Cherwell Valley College
(Banbury)
SSAFA Forces Help Oxfordshire
Oxford DC New start Adult Guidance
Oxford Brookes University
Oxford and Cherwell Valley College
Oxford University Careers Service
Oxfordshire Community & Voluntary
Action
SSAFA Forces Help Oxfordshire
South Oxfordshire SSAFA Forces Help Oxfordshire

Oxfordshire CC Cultural & Adult
Learning Services

Vale of the White Horse DC Witney Connexions Centre

Surrey

Epsom and Ewell DC University for the Creative Arts
Guildford DC Guildford College of F&HE
Runnymede DC Royal Holloway
Waverley DC University for the Creative Arts
Woking DC North West Surrey Association of
Disabled People
Woking Association of Voluntary
Service
Woking Connexions Careers Centre

West Sussex

Arun DC ICIS Information Service
Chichester DC Chichester College
Chichester Library
University of Chichester
Crawley DC Connexions Careers Centre
Crawley Library
Horsham DC Chichester College - Brinsbury
SSAFA Forces Help Horsham
Mid Sussex DC East Grinstead Library
SSAFA Forces Help Sussex
Worthing DC Worthing Library

Southwestern England

Avon

Bath and North East Somerset UC Bath Spa University College
University of Bath
City of Bristol UC Bristol Libraries
Bristol City Council
Charity Search
Connexions West of England
Disability Information and Advice
Service
Employment Links
Open University South West
Solon Housing Association
University of Bristol Careers Service
University of the West of England
Students Union
VOSCUR
North Somerset UC North Somerset CAB
South Gloucestershire UC Connexions West of England
South Gloucestershire Council (Yate
Library)
University of the West of England

Cornwall and Scilly Isles

Caradon DC Duchy College (Callington)
Carrick DC Careers South West Ltd
Cornwall College
Cornwall Disabled Association
Truro College
Truro Reference & Information Library
University College Falmouth
Kerrier DC Cornwall College
Careers South West Ltd
North Cornwall DC Careers South West Ltd
Working Links



Penwith DC	Careers South West Ltd Pathway to Employment		
Restormel DC	Careers South West Ltd Cornwall College St Austell		
Devon			
East Devon DC	Devon County Council SSAFA Forces Help Honiton		
Exeter DC	Careers South West Ltd Devon Library & information Services University of Exeter		
Mid Devon DC	Careers South West Ltd		
North Devon DC	Careers South West Ltd North Devon College WTCS		
Plymouth UC	Careers South West Ltd City College of Plymouth Disability Information & Advice Centre Plymouth College of Art & Design University College Plymouth St Mark & St John University of Plymouth Student Union		
Teignbridge DC	Careers South West Ltd		
Torbay UC	Careers South West Ltd Disability Information Service		
Dorset			
Bournemouth UC	Bournemouth Borough Council Bournemouth & Poole College		
West Dorset DC	Connexions BDP The Gryphon School		
Weymouth and Portland DC	Weymouth and Portland Borough Council		
Gloucestershire County			
Cotswold DC	Cirencester College		
Forest of Dean DC	Royal Forest of Dean College		
Gloucester DC	GUIDE and PALS		
Stroud DC	Stroud and District CAB		
Somerset County			
Mendip DC	Connexions Somerset		
Sedgemoor DC	Somerset Skills and Learning		
South Somerset DC	Connexions Somerset		
Taunton Deane DC	Connexions Somerset Somerset College of Arts & Technology Somerset County Library Taunton Deane CVS Charities Information Bureau		
Wiltshire			
West Wiltshire DC	Shaw Trust Voluntary Action West Wiltshire		
NORTHERN IRELAND			
Belfast			
	Corrymeela Community Queens University Belfast		
SCOTLAND			
Northern Scotland			
Grampian Region			
Aberdeen City UC	Aberdeen Library & Information Service Aberdeen University Student Association		
		Dyce Library Kincorth Customer Access Point Mastrick Library VSA Carers Centre University of Aberdeen Aberdeenshire Disability Action Gordon Rural Action Grampian Caredata Grampian Opportunities	
		Local Community Network – Milnes and Lossiemouth Princess Royal Trust Moray Carers Project The Moray Resource Centre	
Highlands and Islands			
Highland UC	CVS Nairn East Sutherland CAB The Highland Council Community Learning and Leisure The Highland Council Inverness Nairn Badenoch & Strathspey North West Sutherland Advice and Information Service Ross and Cromarty CAB Skye & Lochalsh CVO University of Stirling Careers Development Centre University of Sterling Highland Campus Voluntary Action Lochaber		
Shetland Islands UC	Shetland Council of Social Service		
Eilean Siar	Comhairle nan Eilean Siar		
Tayside and Fife			
Dundee City UC	Dundee City Council Dundee College SSAFA Forces Help Dundee University of Abertay Dundee University of Dundee		
Fife UC	Careers Scotland Citizens Advice and rights Fife Fife Council Libraries Fife Council Money Advice Service SSAFA Forces Help Fife University of St Andrew's Career Centre Voluntary Organisations North East Fife		
Perth & Kinross UC	PKAVS Ltd		
Central Scotland			
Central region			
Clackmannanshire	CVS Clackmannanshire Ltd		
Falkirk UC	Disability Information Service Grangemouth Forth Valley College		
Stirling	Stirling CVS University of Stirling Careers Development Centre Youth Services Stirling Council		
Lothian region			
City of Edinburgh UC	Bethany Christian Trust Capability Scotland		



Edinburgh City Libraries
 Edinburgh Napier University
 FAIR
 Heriot-Watt University Careers Service
 Lothian Centre for Integrated Living
 Lothian Disabled Living Centre
 Sacro
 Scottish Arts Council
 Skill Scotland
 Special Needs Information Point
 University of Edinburgh
 UPDATE
 VOCAL Voice of Carers Across Lothian
 Young Scot

Midlothian UC Midlothian Voluntary Action
 West Lothian UC Livingston Social Work Centre
 West Lothian Money Advice

Strathclyde region

Argyll & Bute UC Argyll & Bute Council
 East Dunbartonshire East Dunbartonshire Council
 Glasgow City UC Glasgow Centre for Inclusive Living
 Glasgow College of Nautical Studies
 Glasgow Metropolitan College
 Glasgow School of Art
 Glasgow West Regeneration Agency
 The Mitchell Library
 Parkhead CAB
 University of Glasgow (Careers)

Inverclyde UC Inverclyde Council
 North Ayrshire UC Arran Council for Voluntary Service
 North Ayrshire Council
 North Lanarkshire Scottish Spina Bifida Association
 Renfrewshire UC Renfrewshire Carers Centre
 University of the West of Scotland

South Ayrshire UC South Ayrshire Council
 University of the West of Scotland

South Lanarkshire UC Care & Repair in South Lanarkshire
 Association of Local Voluntary Organisations (Lanark)

West Dunbartonshire UC Lomond & Clyde Care & Repair
 West Dunbartonshire CAB

Southern Scotland

Dumfries and Galloway UC Dumfries & Galloway College
 Dumfries & Galloway Housing Partnership
 Hollywood Trust
 Princess Royal Trust Borders Carers Centre
 Stewartry Council of Voluntary Service
 University of the West of Scotland

WALES

North Wales

Denbighshire DVSC
 Flintshire Careers Wales North East
 Gwynedd Careers Wales North East
 Disablement Welfare Rights
 University of Wales, Bangor Students Union

Wrexham County AVOW

Glyndwr University

Mid and West Wales

Carmarthenshire Cerebra
 Ceredigion Aberystwyth University
 Powys Dyfodol Powys Futures

South Wales

Caerphilly County Careers Wales Cardiff and the Vale
 Cardiff City and County Cardiff University
 Merthyr Tydfil County Merthyr Care and Repair
 Newport County University of Wales Newport
 Rhondda Cynon Taff University of Glamorgan

Swansea City and County Swansea CVS
 Swansea Libraries
 University of Wales Swansea

Torfaen County Careers Wales Gwent

CHANNEL ISLANDS

Jersey States of Jersey Education Dept

THE REST OF THE WORLD

Spain Age Concern Espāna